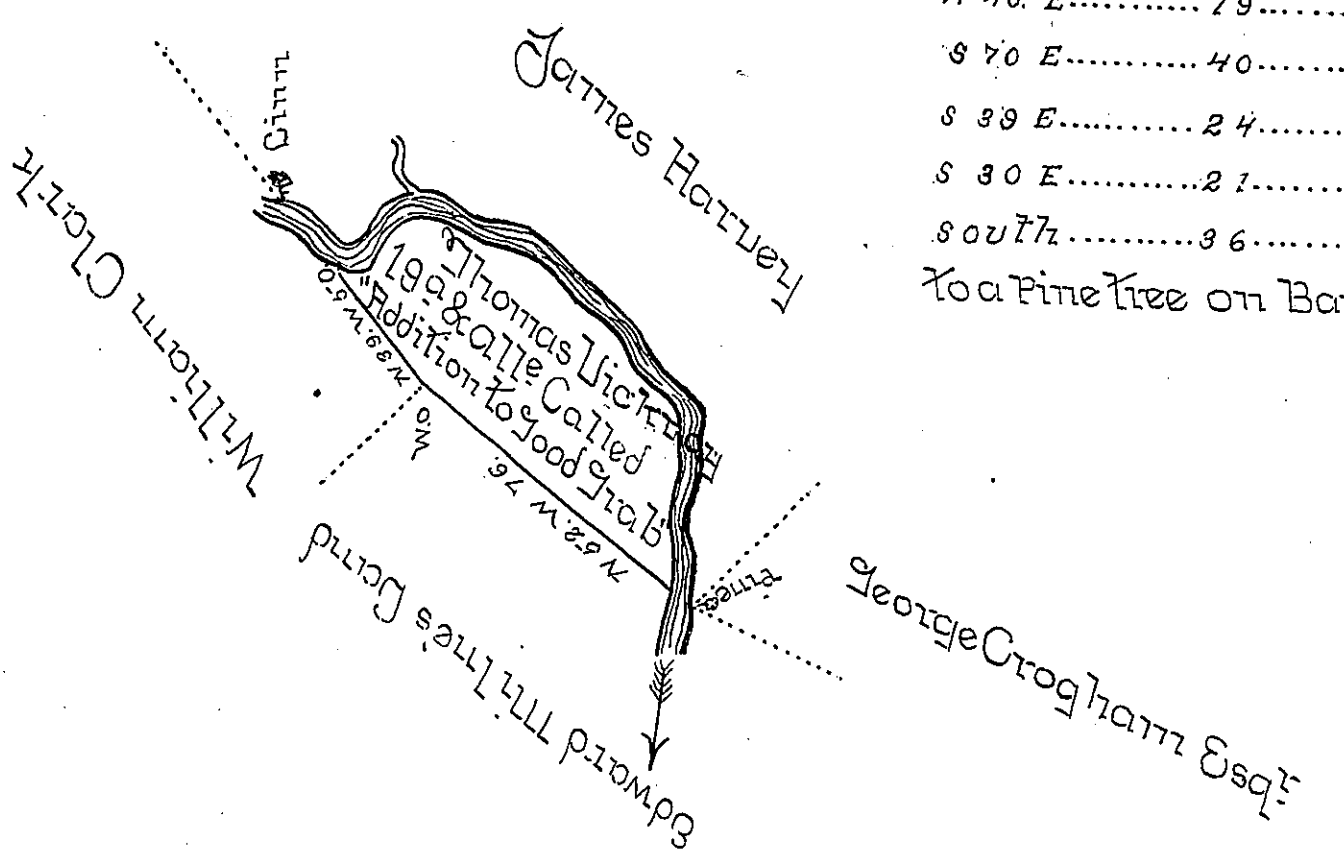


Courses and Distances
 down Dunning's Creek
 from Marked Ginn Tree

S 50. E.....	19.	perches
N 46. E.....	79.....	0°
S 70 E.....	40.....	0°
S 39 E.....	24.....	0°
S 30 E.....	21.....	0°
south.....	36.....	0°

To a Pine Tree on Bank.



Situate on the South side of the West Branch of Dunning's
 Creek opposite to the Alum Bank in the Township and
 County of Bedford and surveyed the 14th day of February
 1788 in Pursuance of a Warrant dated the 15th day of
 January 1788 ~

George Woods D.S.

John Lukens Esq. S.S. ~

IN TESTIMONY that the above is a copy of the original remaining on file in the
 Department of Internal Affairs of Pennsylvania, made con-
 formably to an Act of Assembly approved the 16th day of
 February, 1833, I have hereunto set my Hand and caused
 the Seal of said Department to be affixed at Harrisburg, this

—second— day of —November— 1897—

James W. Pitta
 Secretary of Internal Affairs.